



Interior of the Hilton Yokohama



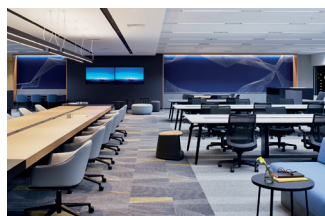
"As a professional group that performs high-quality work related to interiors, ILYA has an extensive track record of projects both in Japan and overseas."

Ryoichi Tazawa, President
& Representative Director,
ILYA Corporation

ILYA Corporation: Delivering total design solutions

An interior design company whose firm focus is the client's point of view, ILYA is a go-to supplier of comprehensive, top-class services.

Since it was founded in 1985, ILYA Corporation has set about establishing itself as one of Japan's leading interior design companies, bringing its proven expertise to numerous major projects under the motto "total design solutions".



Panasonic Corporation Tokyo
Shiodome ©Nacása & Partners Inc.

A firm that declares itself committed to "realizing the dreams and ideals of our clients with our rich sensitivity and creativity", ILYA harnesses its nearly four decades of experience to craft optimal interior environments in buildings belonging to a wide variety of fields, both in Japan and elsewhere in Asia.

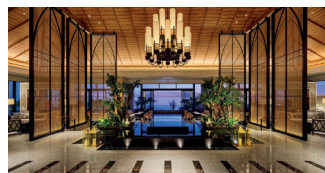
The Tokyo-based company, which has set up international locations in Beijing, Shanghai and Singapore, is divided into three chief business divisions: design, interior construction and furniture procurement/purchase agent services.

Among the areas that ILYA's design department focuses on is office design: not only work spaces themselves, but also meeting rooms,

lobbies and cafeterias. ILYA has broken new ground in Japanese interior design by using facility programming techniques such as multivariate analysis to devise innovative, comfortable work places that faithfully reflect each client's corporate image.

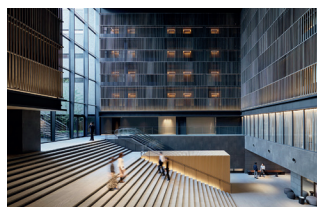
The design department also focuses on hotel design and has extensive experience in planning the interiors of all types of hotels – from luxury to up-scale, and from resorts to city-center establishments. Drawing on its expert, up-to-the-minute knowledge of global hotel design, it creates guest rooms, lobbies, lounges, bars and restaurants that meet the highest quality standards.

Furthermore, ILYA boasts expertise in designing commercial spaces, providing customers with proposals that ideally suit their business and will actively contribute to their success.



Ryukyu hotel & resort
Nashiro beach ©Koujiro Nakajima

Meanwhile, ILYA shapes tailored lifestyle environments in the residential field, designing both living areas and common spaces such as entrance lobbies.



The Thousand Kyoto
©Nacása & Partners Inc.

In addition to designing the interiors of offices, stores, hotels and housing, ILYA also covers hospitals and welfare facilities, educational and research institutions – and many more settings.

In its construction division, ILYA's team of professionals has in-depth know-how on high-grade interior construction, carrying out projects that are delivered on schedule and leave customers completely satisfied on cost and quality. In this business segment, hotels and offices are the company's particular areas of expertise.

Finally, ILYA's furniture department selects and procures the furniture, fixtures and equipment necessary for interior spaces across the wide range of fields that the firm caters to. Sourcing its items at the best possible cost from trusted suppliers in Japan and overseas, ILYA proposes solutions that are precisely in line with clients' needs, in terms of design and function. This department also serves as a purchase agent in the five-star hotel segment.

Notably, the company works closely with research facilities to furnish these institutions in a way that fosters creativity. What's more, it obtains and installs the state-of-the-art laboratory instruments that they need.



Shiseido Global Innovation Center
S / PARK

ILYA's activities in furniture, fixtures and equipment procurement also see it collaborate with many of the foreign five-star hotels in Japan. Supplied by the worldwide network of partners that it has built up over the past 38 years, it provides these hotels with items including tableware, carpets, curtains, art work, lighting fixtures, and IT and AV systems.

